

Durapipe

PLX

Safe Pipework for Fuel

Durapipe UK is a proud member of the British Plastics Federation (BPF) Plastics Pipes Group (PPG)



The BPF Plastic Pipes Group (PPG) is the leading trade association representing manufacturers and material suppliers of plastic piping systems in the United Kingdom.

Established in 1962, the PPG is dedicated to promoting the development, acceptance and usage of manufactured plastic piping systems at all levels in the building, construction, civil and utilities industries.

PPG member responsibility and compliance to Standards, Approvals and product quality

PPG member companies have a responsibility to the industry to ensure products manufactured meet the needs of the application they are intended for and therefore invest in stringent testing and compliance with standards and approvals.

The BPF pipes group fully support compliance with standards so installers and end users can assume BPF membership is a sign of quality assurance and compliance with these standards.

All BPF members sign up to a charter to ensure integrity, adherence to standards and commitment to quality.

When you choose products from a Plastic Pipe Group member you are automatically choosing products of quality.

Durapipe UK Contact Numbers

Customer Services

+44 (0)844 800 5509
enquiries@durapipe.co.uk

Technical Support

+44 (0)1543 272 445
technical@durapipe.co.uk



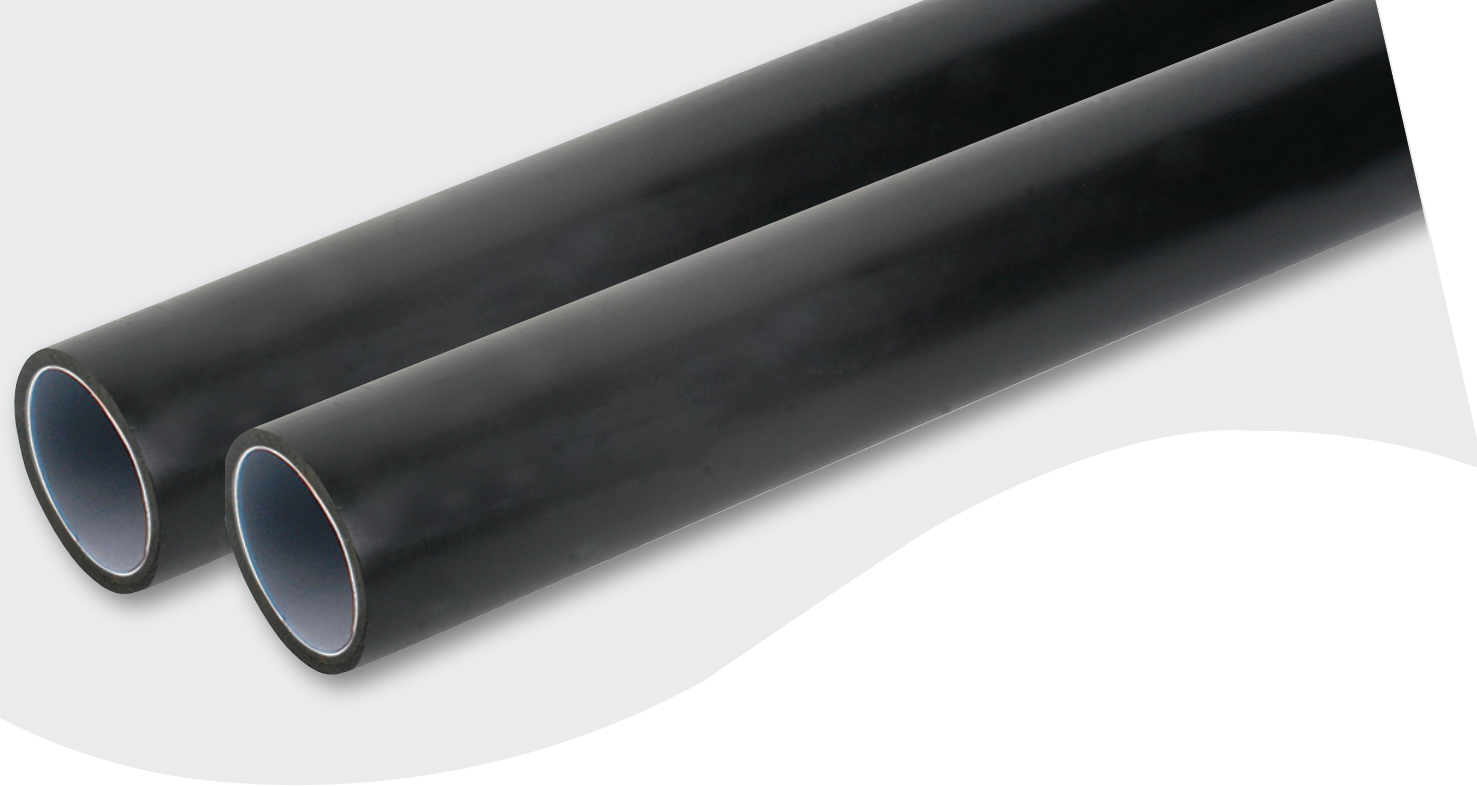
Durapipe PLX is a complete range of dedicated fusion-welded pipework systems for the safe transfer of liquid fuels and their vapours. Suitable for use with leaded, unleaded petroleum, including ethanol rich alternative fuels (E85), diesel, bio-diesel and fuel oils.

The Durapipe PLX range was originally developed over 20-years ago and through continuous product innovation. PLX plastic piping offers the ultimate in environmental with maximum protection against permeat leak free joints when transferring fuel.



Contents

PLX Single Wall Pipe	4
PLX Close-Fit	5
PLX Pipe-in-Pipe	6
PLX Blue	7
PLX+	8
PLX Tools & Accessories	9
Pipework for Forecourts	10
Pipework for Transport Refuelling	12
Pipework for Critical Power	14
Pipework for Data Centres	16
Durapipe UK added value	18
Sustainability	19



PLX Single Wall Pipe

Our high performance multi-layered polyethylene composite pipe system has been used for over 20-years for fuelling applications

PLX single-wall is available in sizes from 32-160mm (up to 315mm available upon request) and is commonly used for below ground applications both within forecourts and other bulk fuelling environments. The single-wall product is available in straight lengths or coils.

The pipe system is co-extruded with a protective layer using the latest extrusion technology, resulting in consistent and technically superior performance.



Key Product Information

- Forecourt & bulk fuelling installations
- Below ground applications
- Suction & Offset Fill lines
- Size Range: 32mm to 160mm (up to 315mm on request)
- SDR 11 & SDR 17
- PN10 and PN6 rated
- Polyethylene black outer skin
- Available in straights and coils
- EN 14125 approved
- Fusion welded system
- UV resistant

PLX Close-Fit Pipe

PLX dual contained ‘Close-Fit’ pipework provides security against accidental fuel leaks or losses whilst providing an opportunity for continuous interstitial monitoring and environmental protection.

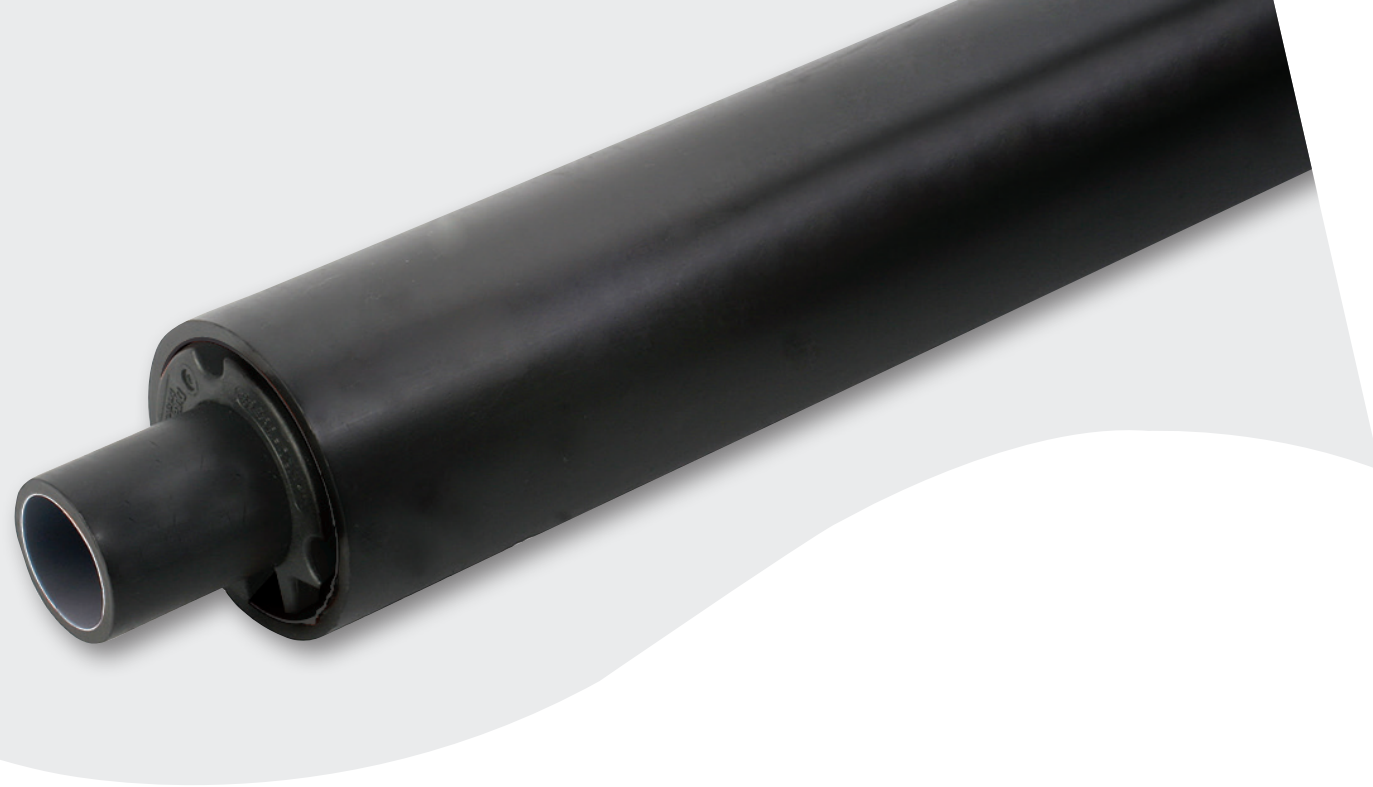
PLX Close-Fit pipe is available in sizes from 32#40mm to 110#125mm and is used for above and below ground applications for the fill and vent requirements within forecourts and other bulk feeling situations. Close-Fit pipe is available in straight lengths or coils.

The pipe system is co-extruded with a protective layer using the latest extrusion technology, resulting in consistent and technically superior performance.



Key Product Information

- Forecourt & bulk fuelling installations
- Above and below ground applications
- Suction applications
- Size Range: 32#40mm to 63#75mm - SDR11 - PN10
90#110mm to 110#125mm - SDR17 - PN6
- Dual contained system with self centering ribs
- Ability to monitor interstitial space for leak detection security
- UV resistant
- ‘One-Weld’ transition technology
- Polyethylene black outer skin with red stripes
- Available in straights and coils
- EN 14125 approved
- Fusion welded system



PLX Pipe-in-Pipe

The PLX 'Pipe-in-Pipe' system offers a dual contained option that can be used above or below ground. Pipe-in-Pipe provides resistance to fuel blends, ensuring there is no permeation of fuel through to the atmosphere.

PLX Pipe-in-Pipe is available in sizes from 32#63mm to 315#400mm and has a pressure rating of 10bar whilst operating up to 20°C. The system is often used in transport refuelling applications such as rail yards and marinas or where large volumes of fuel, or fuel contaminated water needs to be transported.

The pipe made from a robust Polyethylene material provides exceptional resistance to rapid crack propagation and long term stress cracking.



Key Product Information

- Forecourt & industrial installations
- Above & below ground applications
- Suitable for ducted installations
- Size Range: 32#63mm to 110#160mm (up to 315#400 available on request)
- SDR 11
- PN10 rated
- Dual contained system with interval supports between pipes
- Ability to monitor interstitial space for leak detection security
- UV resistant

PLX Blue

With the ever-increasing use of AdBlue to lower NOx concentrations in the exhaust emissions of diesel engines, a high quality pipework system is required to convey the solution from tank to pump. PLX Blue offers the choice of both single wall and dual contained, giving the option to be monitored for leak detection if required and offering peace of mind to the installer and client alike.

PLX Blue is available in sizes from 32mm up to 63#75mm as standard (larger sizes available on request) and has a pressure rating of 10bar, operating up to 20°C.

The system is often used in forecourts and other transport refuelling applications such as, distribution centres, lorry parks, rail yards and marinas.

The pipe made from a robust Polyethylene material provides exceptional resistance to rapid crack propagation and long term stress cracking.



Typical Applications

- Forecourts
- Truck parks
- Distribution centres
- Ports and Marinas
- Rail

Features and benefits

- Single wall 32mm up to 63mm (straights & coils)
- Dual contained 32#40mm up to 63#75mm (coils)
- Dual contained 32#40mm (straights)
- PN10 rated
- Polyethylene black outer skin with sky blue stripes
- System specially tested for Adblue® applications
- Fusion welded system
- 'One-Weld' transition technology

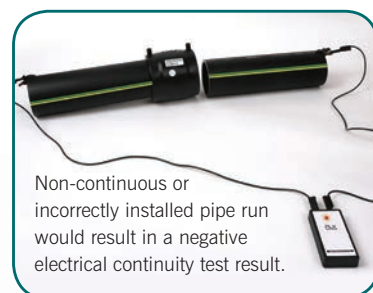


PLX+



This new 'conductive' (dissipative) system offers installers and specifiers alike, a new solution in the world of safe conductive plastic pipework for fuel.

With the pipe's dissipative qualities and the fittings' innovative design, PLX+ offers a truly distinct system which enables the contractor a swift and precise installation without any concerns. The integral conductive connector ensures that there are no loose items which could go missing during the installation process, whilst the green and yellow striping gives clear indication that the pipe system is 'conductive'.



Forecourt

- Pressure Systems
- Suction Systems
- Offset Fill
- Vents
- Tank Chamber Connection
- Sump & Pump Connection

Features & Benefits

- 50mm up to 125mm
- Polyethylene black outer skin with green & yellow stripes
- Single wall & dual containment
- PN10 (up to 63mm) and PN6 (90mm upwards) rated
- EN 14125 approved
- Complies with ATEX 137 directive
- Fusion welded system
- 'One-Weld' transition technology

Products

- Single Wall
- Dual Containment
- Threaded Transitions
- Flanged Transitions

PLX Tools & Accessories

New

The range of PLX preparation tools and accessories has been specifically developed in order to enhance a smooth and easy pipework installation process.

Welding Machines

PLX Welding Machine



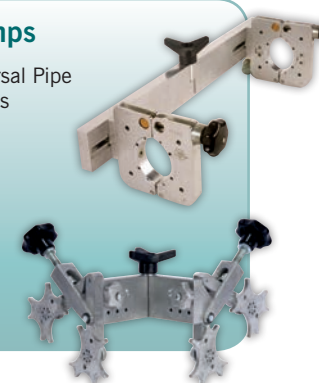
Peelers

SurPrep Multikit



Clamps

Universal Pipe Clamps



Cutters

Pipe Cutter



Protection Sleeves

Protection Sleeve



Joining videos that demonstrate how to install the different PLX pipe systems are available online via www.durapipe.co.uk/technical-support/joining-videos

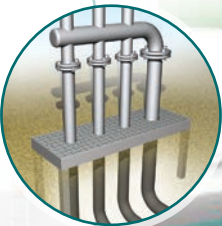


Durapipe PLX for Forecourts

Durapipe PLX has been used to fulfil the different pipework requirements of the forecourt market for over 20 years. The range consisting of both single wall and dual contained pipe and fittings has been installed in thousands of stations around the world during this time. Furthermore, the NEW PLX+ system now caters for 'conductive' specifications in the forecourt market.

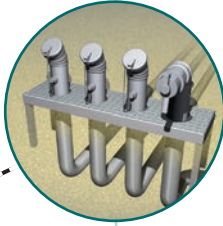
Vents

PLX pipe and fittings safely transfer the vapour, from the pumps to the underground storage tanks, with no permeation into the atmosphere. Used for both stage one and stage two vapour recovery PLX is your safe, environmentally friendly choice for installation. The larger bore of PLX fill and vent systems will assist air/vapour flow and the condensed vapour return to it's respective tank.



Offset Fill Area

In order to dramatically reduce tank filling time and to save costs and downtime for the forecourt, the larger bore of PLX fill and vent pipe improves flow and reduces UST fill time. For higher fuel velocities, PLX+ has been developed for 'conductive' specifications.



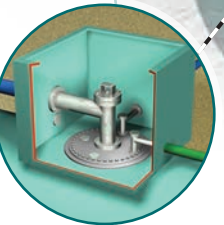
AdBlue/DEF

PLX Blue is a specifically developed pipe system for the conveyance of diesel exhaust fluid/AdBlue. PLX Blue is available in sizes from 32mm to 63mm, in both single wall and dual contained options.



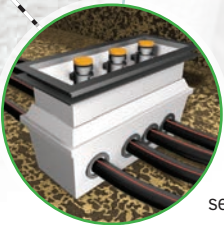
Tank Chamber Connection

The chamber is central to the forecourt fuel system, it provides inspection access to the tank and protects the fill, suction, pressure (pump), siphon and vent connections. With space at a premium the innovative design of Durapipe PLX EF demountable compact flanges helps to minimise installation time and ensures easy access to the tank.



Sump and Pump Connection

PLX threaded adaptors and compact flanges provide a safe and secure connection to pumps, dispensers and tank top fittings. Designed for pressure and suction applications PLX spigot and EF threaded adaptors make perfect under pump connections while the compact demountable flange sets are best used in the confined spaces and restricted access of tank chambers. PLX fully fused dual contained fittings and extended transitions can help to reduce costs and eliminate the need for under-pump sumps.



Durapipe PLX for Transport Refuelling applications

The bulk fuelling requirements of transportation hubs can be diverse where reliability is of paramount importance. PLX plastic piping, often in large diameter sizes has been used to supply fuel to marinas, airports, rail haulage yards and haulage distribution depots.

Haulage or distribution centres

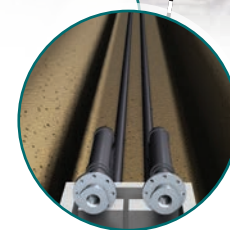
PLX is suitable to convey a wide range of fuels including petrol, diesel, biofuels and AdBlue/DEF. The added protection of the dual containment pipework provides a leak tight system suitable for high-speed suction or pumped applications.



Airport

Aviation

PLX is both internally and externally corrosion resistant, as well as being compatible with civil and military grade aviation fuels. Durapipe PLX ensures a clean supply to all types of aviation refuelling activity.



Distribution Centre

Tunnel

Tunnels

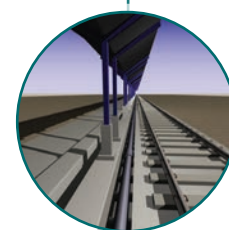
PLX is perfect for surface water drainage pipework installations which are under most road tunnels. Through kerb drainage systems, PLX can be connected safely and transfer these mixed chemical fluids through to separator and other storage facilities.



Railway Depot

Rail

Compact, robust and maintenance free, Durapipe PLX is insulated against accidental damage and freezing conditions. Easily installed into pre-formed shallow ducts, Durapipe PLX systems are suitable for fuel and lubrication oil dispensing applications whilst ensuring no permeation.



Marina

Ports and Marinas

Durapipe PLX dual Contained pipework provides a secure environment for bulk transfer of marine fuels to storage tanks, during vessel refuelling, bunkering and bilge water pumping operations.



Durapipe PLX for Critical Power Supply applications

Sudden or prolonged loss of electrical power can be catastrophic for many business services so for extra security, oil powered emergency or uninterrupted power supplies (UPS) are installed for back-up power.

Durapipe PLX pipework is often installed to convey fuel oil to boilers, which in turn powers back-up generators.

Emergency Power Supply

PLX pipework is used to safely transport fuel from storage tanks to generators for emergency power supply applications.

The pipework system ensures a continuous flow of fuel to the back-up generator which is imperative to a building such as a hospital or prison.



Hospital

Prison

Level Crossing

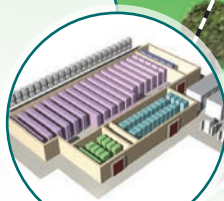
Data Centre

Manor House

Uninterrupted Power Supply

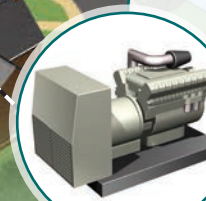
PLX is the ideal pipework system for uninterrupted power supply applications.

In buildings such as data centres where any loss of power, and subsequent loss of information could be financially catastrophic, an uninterrupted power supply (UPS) is imperative. PLX above & below ground pipework is perfect for supplying fuel to UPS systems.



Heat & Power Supply

For buildings in remote locations, Durapipe PLX can be used to convey fuel to boilers and generators to provide heating, hot water and power.

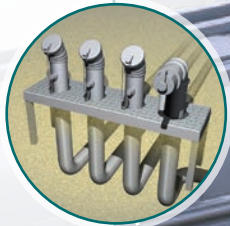


Durapipe PLX for Data Centres

With a global increase in the reliance of external data management systems, the need for reliable data centres continues to grow. The piping requirements of a data centre can be complex with a back-up/emergency power system a fundamental requirement. PLX plastic piping can be installed for the transfer of fuel to fulfil this need.

Offset Fill & Vent

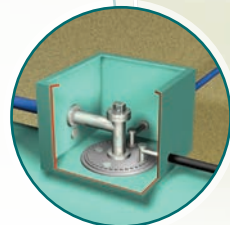
PLX is a specifically designed pipework system for the safe transfer of fuel-based liquids both above & below ground. The gravity fill & vent pipe with its larger smooth bore reduces time and costs when filling underground fuel storage tanks. This pipework is also perfect for venting the system to ensure the tank and associated pipework are pressure balanced at all times whilst filling the tank or conveying fuel to the generator inside the data centre.



Tank Chamber Connection

The chamber is central to the fuel supply system. It provides inspection access to the tank and protects the fill, pressure, siphon and vent connections.

With space at a premium the innovative design of Durapipe PLX helps to minimise installation time and ensures easy access to the tank.



Emergency Power Supply

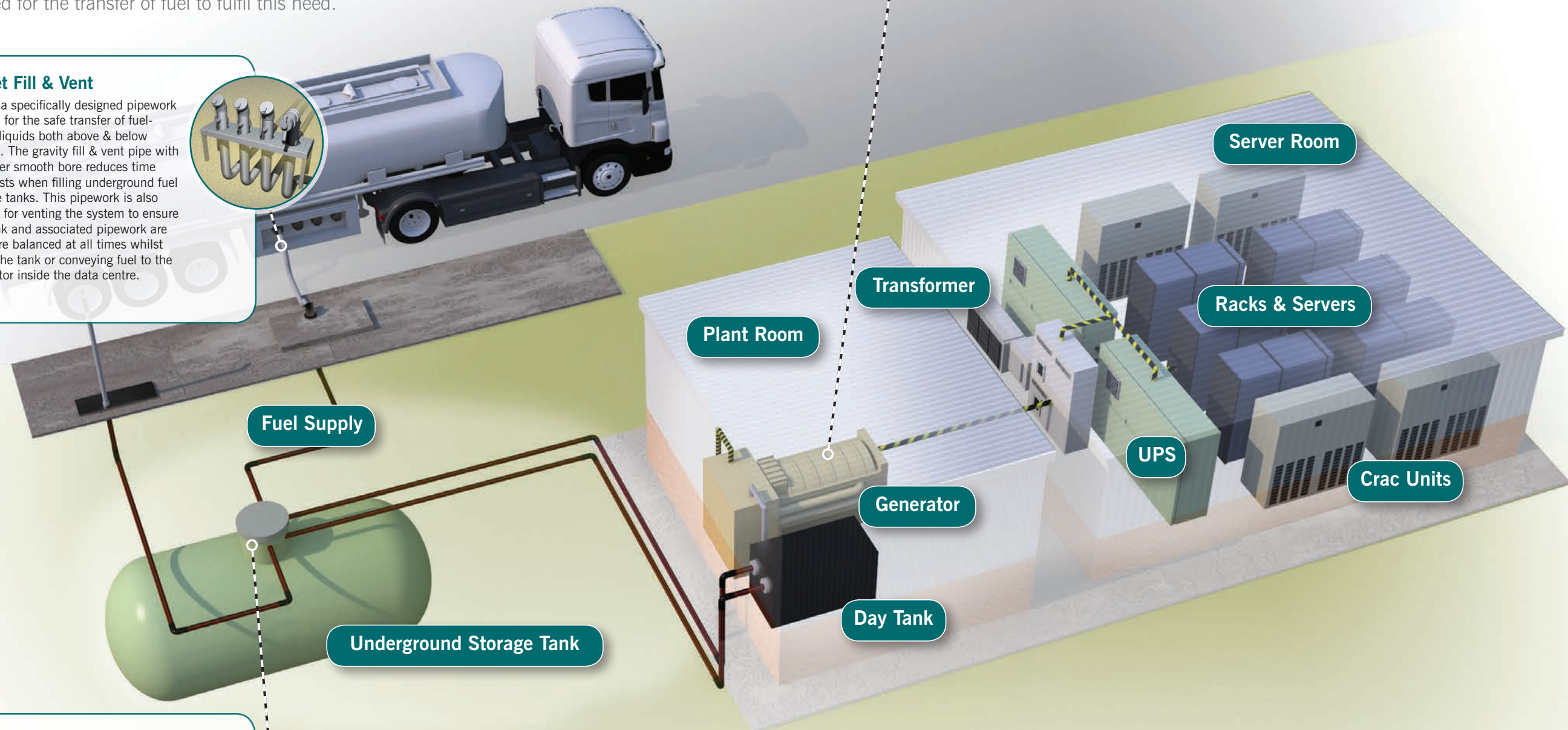
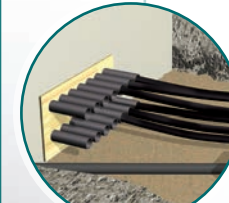
PLX pipework is used to safely transport fuel from external underground storage tanks to the central generators of a Data Centre for emergency power supply applications.

The pipework system ensures a continuous flow of fuel which is fundamental for back-up power.



Uninterrupted Power Supply

PLX is the ideal pipework system for uninterrupted power supply (UPS) applications. Any loss of power and subsequent loss of information would be catastrophic to a Data Centre and therefore a reliable UPS system is imperative. PLX specialist above & below ground piping is ideal for supplying fuel to ensure effective operation of UPS systems.





Added Value

Technical Support

We offer an unrivalled level of technical support where our experienced team can provide product training and installation advice on any given project. They also provide material estimate advice from architects' drawings.

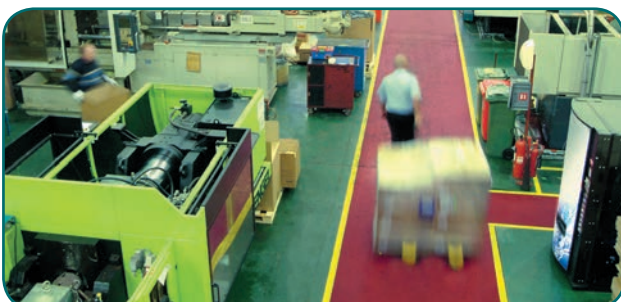


Company Chemist

Our internal company chemist is at your disposal. If you have concerns regarding the chemical combination that a pipework system needs to convey, we can evaluate suitability of the chemical you wish to convey and advise on the best available Durapipe material to use for the system.

Global Distribution Network

All of our products are available from an extensive network of distributors and stockists. Please contact us on 01543 273100 for details of your nearest outlet.



Quality Manufacturing

As part of the global Aliaxis group, quality is central to our manufacturing operation with BS EN ISO9001 certification. Furthermore, an environmental management system which operates in accordance with the requirements of ISO 14001.

Customer Service

We pride ourselves on being able to offer the highest level of customer service possible. Our customer services support team cover all of our brands as well as stock planning and availability, all designed to provide you, our customer with an improved level of service.

Installation Advice

One of the many benefits of using plastic pipework systems instead of traditional materials is the simplicity of the jointing process. We offer FREE practical product selection & jointing advice on our PLX range including jointing demonstrations, installation advice and even material selection.



Our International
PLX Business
Development manager,
Alain Rondeau

Telephone number
+44 7901 510 644



Sustainability

Introduction

Plastic piping systems are a sustainable and environmentally responsible choice that will serve generations to come. They are energy efficient during manufacturing and provide peak performance during service. Strong, durable, lightweight and flexible, plastic piping systems require significantly less energy to manufacture, transport and install than metal alternatives, and supply a long service life.

The cumulative energy requirements to manufacture, install and transport plastic pipework is estimated to be substantially less than most non-plastic systems.

Plastic saves energy – besides the technical advantages of plastics (eg. corrosion resistance) there are inherent benefits that contribute to energy efficiency and energy sustainability. The chain of activity outlined on the opposite page highlights where plastic has a positive impact compared to copper and steel which have a higher energy demand.



Durapipe & Aliaxis

The continuous mission of Durapipe and the Aliaxis group is to ensure our product offering is as sustainable as possible and considers the impacts on the environment whilst maintaining the highest quality and performance.

- Comply with all relevant environmental legislation, codes of practice and standards relating to quality and the environment.
- Continually improve the company's environmental performance, minimising any pollution risk and adopting best practice.
- Increase usage of recycled materials where appropriate.
- Take positive action to reduce waste by promoting energy conservation and recycling.
- Optimising production processes.
- Consolidating transportation routes across group companies.

Durapipe Environmental Management System

Durapipe UK operates an environmental management system that has been successfully assessed against the BS EN ISO 14001 environmental management system.



Durapipe UK reserves the right to modify the details in this publication as products and specifications are updated and improved.

The content of this publication is for general information only and it is the user's responsibility to determine the suitability of any product for the purpose intended.

For further information on all Durapipe UK products and services contact our Customer Services Department as detailed below.

Customer Services

Tel: +44 (0)844 800 5509

Fax: +44 (0)800 317 875



Registered Office:

Durapipe UK

Walsall Road

Norton Canes

Cannock

Staffordshire

WS11 9NS

United Kingdom

Tel: +44 (0)1543 279909

Fax: +44 (0)1543 279450

email: enquiries@durapipe.co.uk

web: www.durapipe.co.uk